

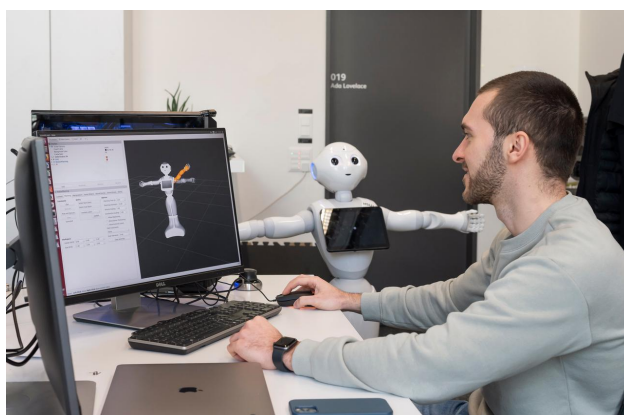
Fact Sheet for Partner Universities 2025/2026

Name of the University	Hochschule Luzern (HSLU) Lucerne University of Applied Sciences and Arts
School / Faculty	Hochschule Luzern – Informatik (HSLU-I) School of Computer Science and Information Technology
Postal Address	International Office Campus Zug-Rotkreuz Suurstoffi 1 CH-6343 Rotkreuz Switzerland
Website	International Office - General Website
IO Email Address	international.it@hslu.ch
Erasmus Code	CH LUZERN14
Information for Incoming Exchange Students	Information for Incoming Students
International Office	
Head of International	Nina Blaettler, international.it@hslu.ch
Deputy Head of International	Annik Scholzen, international.it@hslu.ch
Team members of International Office	Selma Crosby (Outgoing Exchange Students), international.it@hslu.ch Salome Lütolf (Incoming Exchange Students), international.it@hslu.ch



Important Dates	
Fall Semester 2025 (current semester dates can be found on our website)	
Nomination & Application Deadlines	<p>Nomination (by email): 15th April 2025</p> <p>Application (online): 30th April 2025 for the following fall semester and/or full academic year</p> <p>After nomination, the student will receive access to our online application tool (Mobility Online) to complete their application.</p>
Get started in Lucerne Workshops (mandatory)	<p>Part One: 5th July 2025, online via Zoom</p> <p>Part Two: 13th September 2025, on-site, in person, in Lucerne</p> <p>Registration and more information here.</p>
Introductory weeks	<p>Introductory weeks for new incoming students take place two weeks before the semester starts (1st September – 12th September 2025). Students can choose between intensive language courses or courses in their study field. For non-German speaking incoming students we highly recommend attending the German as a foreign language course.</p>
Semester dates	<p>15th September 2025 – 3rd February 2026</p> <p>Exam period: mid-January 2026 – first week of February 2026</p> <p>Students are expected to stay in Switzerland for the exam period.</p>
Public holidays	<ul style="list-style-type: none"> • 1st November 2025 (All Saints' Day) • 8th Dezember 2025 (Immaculate Conception)
Spring Semester 2026 (current semester dates can be found on our website)	
Nomination & Application Deadlines	<p>Nomination (by email): 15th October 2025</p> <p>Application (online): 31st October 2025 for the following spring semester</p> <p>After nomination, the student will receive access to our online application tool (Mobility Online) to complete their application.</p>
Get started in Lucerne Workshops (mandatory)	<p>Part One: 13th December 2025, online via Zoom</p> <p>Part Two: 14th February 2026, on-site, in person, in Lucerne</p> <p>Registration and more information here.</p>
Introductory weeks	<p>Introductory weeks for new incoming students take place two weeks before the semester starts (2nd – 13th February 2026). Students can choose between intensive language courses or courses in their study field. For non-German speaking incoming students we highly recommend attending the German as a foreign language course.</p>
Semester dates	<p>16th February 2026 – 4th July 2026</p> <p>Exam period: 15th June 2026 – 4th July 2026</p> <p>Students are expected to be in Switzerland for the exam period.</p>
Public holidays	<ul style="list-style-type: none"> • 3rd April 2026 (Good Friday) • 6th April 2026 (Easter Monday) • 14th May 2026 (Ascension Day) • 25th May 2026 (Whit Monday) • 4th June 2026 (Corpus Christi)

Academic Information	
Courses for Incoming Exchange Students	Courses can be found on our website for incoming students.
Grading System	From 1 – 6 (6 is the highest, 1 is the lowest grade, passing grade is 4)
European Credit Transfer System System	The Lucerne University of Applied Sciences and Arts uses the ECTS (European Credit Transfer System) System and allocates ECTS credits to all undergraduate and postgraduate programs. In line with ECTS requirements, 60 ECTS credits measure the studyload of a full-time student for one academic year. One ECTS credit equates to approximately 30 hours of studyload for the student (to include attendance in class as well as outside of class studyload such as: note-taking, self-study, homework, group work etc.)
Study Load per semester	Maximum: 30 ECTS / Minimum: 18 ECTS
Language Requirements	Proof of English Proficiency: CEFR B2 level (if English is not the student's mother-tongue and they are applying for courses taught in English) or Proof of German Proficiency: CEFR B2 level (if German is no the student's mother-tongue and they are applying for courses taught in German)
Admission Requirements	Students must have completed at least two semesters of study at their home university before their exchange semester at HSLU; proof of language proficiency; recommended GPA 2.75 (out of 4) or above.
Language Courses	HSLU Language centre offers a wide range of language courses.
Course Registration	The HSLU exchange program coordinator will carry out course registrations for international students in accordance with their predefined learning agreement. (NB: Registration in language courses do not apply). Students are required to apply on their own: information follows application.
Transcripts of Records	Transcripts are generally available two to three weeks after the last date of the exam window. The HSLU exchange program coordinator will send the official transcript to the student's home institution as well as a copy to the student by email.



Further Information for International Students

General Information for Incoming Students	Information on courses available in English, our student guide, and the application process can be found here: Information for Incoming Students
Accommodation	Our on-campus accommodation offer can be found here . Room bookings must be made via our online application tool (Mobility Online). The booking period for fall semesters starts on 15th May for students from partner universities. Freemover students can book as of 30 th May. The booking period for spring semesters starts on 15th November for students from partner universities. Freemover students can book as of 30 th November.
Campus Video	HSLU Campus Zug-Rotkreuz Video HSLU Study in the Heart of Switzerland
Buddy Program	HSLU has two buddy programs. The European-wide ESN Luzern (Erasmus Student Network) as well as our own, on-campus Buddy Program exclusive to students at the School of Computer Science and Information Technology. Students can signal their wish for a buddy during application process.
Visa Information	Visa Information Website Contact our International Office. We are happy to provide more information in case you need a visa to enter Switzerland.

