



OFFICE OF INTERNATIONAL AFFAIRS

[global.hanyang.ac.kr](http://global.hanyang.ac.kr)

[ericasummer.hanyang.ac.kr](http://ericasummer.hanyang.ac.kr)

ERICA



# Hanyang University ERICA

The new standard for Education Research and Industry Collaboration  
Hanyang University Education Research Industry Cluster at Ansan



Established  
**1979**



Colleges  
**10**



Departments  
**41**

Graduate Schools  
**2**



Undergraduates  
**14,347**

Graduates  
**1,970**



Int'l Student Body  
Approx. **4,500**  
annually



World Univ. Ranking  
**162**nd (2025)

Asian Univ. Ranking  
**14**th (2023)

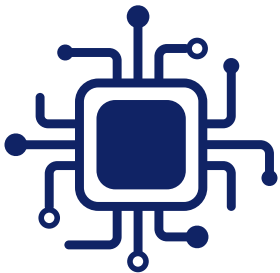
# Why Study at HESS?



Hanyang University ERICA's College of Sports & Arts focuses on teaching **K-Pop music and dance**, rather than classical music and dance. Korea's K-Pop is globally renowned. Learn K-Pop music and dance that lead the K-Pop industry at Hanyang University ERICA.



**College of Design** at Hanyang University ERICA is one of the top design schools in Korea. At HYU ERICA, you can study fields such as Convergence Design, Jewelry & Fashion Design, Industrial Design, Communication Design, and Interactive Design. Come and learn design from the distinguished faculty at Hanyang University ERICA.



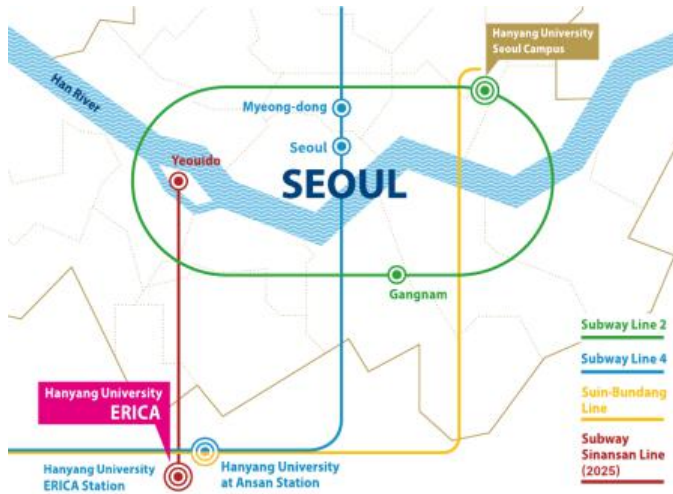
Hanyang University is renowned for its contributions to Korea's industrial development, particularly for its prestigious **College of Engineering**. Among its standout fields, **semiconductors and AI** are key areas that represent the ERICA Campus. Explore the industries leading the world at HESS.



Hanyang University's **College of Business & Economics** is globally recognized with **AACSB** accreditation. Learn business from the perspective of Korea and the broader Asian region. Additionally, discover **how the K-Pop industry generates revenue** at HESS!

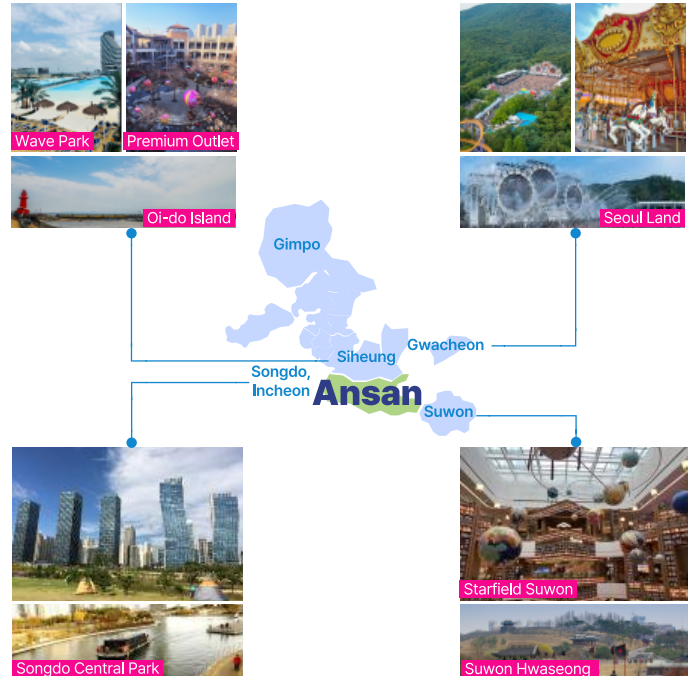
# Why Stay at HESS?

## Easy access to hotspots in Seoul



- 55 Hanyangdaehak-ro, Sangnok-gu, Ansan, Gyeonggi-do, 15588, South Korea
- 30km away from Gangnam (40 minutes by bus or subway)
  - 45km away from Myeongdong (60 minutes by bus or subway)
  - Hanyang University ERICA Station (Subway Line No.4)
  - Subway Route Shin Ansan Line is scheduled to open by 2027 (25 minutes from Yeouido to the ERICA Campus)

## Easy access to Gyeonggi-do tourist sites



# HESS at a Glance

Take classes, earn grades, join field trips, and make new friends in just two weeks!







	Academic Course Track			Cultural Course Track		
Program Period	<ul style="list-style-type: none"> <li>· <b>Session 1:</b> July 18(Fri) - August 2(Sat), 2025 (2 weeks)</li> <li>· <b>Session 2:</b> August 2(Sat) - August 17(Sun), 2025 (2 weeks)</li> </ul>					
Experience Korea	2 free activities offered per session					
Credits	<ul style="list-style-type: none"> <li>· Enroll in <b>one session</b> and earn a maximum of <b>4 credits</b> (2 weeks)</li> <li>· Enroll in <b>two sessions</b> and earn a maximum of <b>8 credits</b> (4 weeks)</li> </ul>			<ul style="list-style-type: none"> <li>· Enroll in <b>one session</b> and earn a maximum of <b>2 credits</b> (2 weeks)</li> <li>· Enroll in <b>two sessions</b> and earn a maximum of <b>4 credits</b> (4 weeks)</li> </ul>		
Program Fee for Partner University	Academic	One Session (2 weeks)	Two Sessions (4 weeks)	Cultural	One Session (2 weeks)	Two Sessions (4 weeks)
	Total Fee	KRW 2,100,000 → KRW 1,600,000 (Approx. USD 1,202)	KRW 3,900,000 → KRW 2,900,000 (Approx. USD 2,179)	Total Fee	KRW 1,900,000 → KRW 1,400,000 (Approx. USD 1,052)	KRW 3,500,000 → KRW 2,500,000 (Approx. USD 1,878)
	Including	Tuition Fee, Free activities, Housing (twin room only)				
	NOT Including	Food, Insurance, Flight etc				



# Calendar

Overview of important dates and events for HESS 2025

Session 1 Session 2

SUN	MON	TUE	WED	THU	FRI	SAT
					<b>Jul 18</b>	<b>Jul 19</b>
					Session 1 Check-in	Activity 1 
<b>Jul 20</b>	<b>Jul 21</b>	<b>Jul 22</b>	<b>Jul 23</b>	<b>Jul 24</b>	<b>Jul 25</b>	<b>Jul 26</b>
Free Time	Orientation Class Welcoming Party 	Class	Class	Class	Class	Activity 2 
<b>Jul 27</b>	<b>Jul 28</b>	<b>Jul 29</b>	<b>Jul 30</b>	<b>Jul 31</b>	<b>Aug 1</b>	<b>Aug 2</b>
Free Time	Class * Last day of 1-Credit Course	Class	Class	Class	Class Graduation	Session 1 Check-out Session 2 Check-in
<b>Aug 3</b>	<b>Aug 4</b>	<b>Aug 5</b>	<b>Aug 6</b>	<b>Aug 7</b>	<b>Aug 8</b>	<b>Aug 9</b>
Activity 1 	Orientation Class Welcoming Party 	Class	Class	Class	Class	Activity 2 
<b>Aug 10</b>	<b>Aug 11</b>	<b>Aug 12</b>	<b>Aug 13</b>	<b>Aug 14</b>	<b>Aug 15</b>	<b>Aug 16/17</b>
Free Time	Class * Last day of 1-Credit Course	Class	Class	Class	Class Graduation	Session 2 Check-out

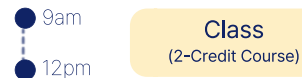
## DAILY SCHEDULE

### Academic Course Track



- 3-Credit Course : 4.5 hrs/day x 10 days
- 1-Credit Course: 3 hrs/day x 5 days

### Cultural Course Track



- 2-Credit Course: 3 hrs/day x 10 days

# Course

Below is a tentative list of courses which will be opened in HESS 2025.

1 credit is equivalent to 15 contact hours.

## Academic Course Track

Select one 3-credit course + one 1-credit course per session

### 3-Credit Course

- Understanding K-Pop Business
- Consumer Psychology
- Future Creative Design Workshop
- Media & Entertainment Business
- Robotics
- Understanding AI
- Semiconductor Engineering

### 1-Credit Course

- K-Beauty and Makeup
- K-Pop Dance
- K-Pop Vocal
- Taekwondo
- Basic Korean Language

## Cultural Course Track

Select one 2-credit course per session

### 2-Credit Course

- K-Beauty and Makeup
- K-Pop Dance
- K-Pop Vocal
- Taekwondo
- Comprehensive Fitness Training
- Korean Language and Culture

\* Courses subject to change

\* Opening a new course available with minimum 20 participants

# Activities

Join us and enjoy the summer you will never forget!

## Activity 01 (Free) K-pop Music Concert



We know you have always wanted to watch K-pop music concert, but did not have the chance. **HESS will bring you to the world of K-pop.** Do not miss the opportunity to feel the vibe at the performance scene!

## Activity 02 (Free) Lotte World



Lotte World is a popular **theme park** in Seoul, South Korea, featuring **indoor and outdoor areas**, thrilling rides, shows, and entertainment, making it a major tourist destination.

## Activity 03 (+Extra Fee) Overnight Trip



If you wish to **visit a traditional Korean city** over the weekend and want to avoid the hassle of preparing on your own, join our overnight trip! It's a perfect opportunity to **experience the charm of Korea's rich traditions**, especially outside the metropolitan area.

*\*Activities subject to change*



# Accommodations

Hanyang University ERICA offers on-campus dormitory accommodations for all participants.



- **Stay Period** : 2 weeks per session
- **Price** : Included in program fee (KRW 200,000 for 2 weeks / KRW 400,000 for 4 weeks)  
(Approx. USD 150 for 2 weeks / USD 300 for 4 weeks)
- **Room Type** : Twin(2-person) room only (Single room not available)
- **Room Features** : Bathroom, shelved desks with chairs, closet, air-conditioner, single bed, trash bin, cleaning broom, LAN ports and wireless router(WIFI available)
- **Facilities** : Convenience store, stationery store, study room, laundry room, hair salon, fitness center, food court, BHC Fried Chicken, Aunt's Kitchen(small restaurant) etc

*\* Refund for housing is NOT available*

# Program Fees

## Academic Course Track

	One Session (2 weeks)	Two Sessions (4 weeks)
<b>Tuition Fee</b>	<b>KRW 1,900,000</b> Approx. USD 1,427	<b>KRW 3,500,000</b> Approx. USD 2,630
<b>Activities</b>	<b>Free (2 activities)</b>	<b>Free (4 activities)</b>
<b>Housing</b>	<b>KRW 200,000</b> Approx. USD 150	<b>KRW 400,000</b> Approx. USD 301
<b>Total (Non-partner)</b>	<b>KRW 2,100,000</b> Approx. USD 1,578	<b>KRW 3,900,000</b> Approx. USD 2,930
<b>Total (Partner)</b>	<b>KRW 1,600,000</b> Approx. USD 1,202	<b>KRW 2,900,000</b> Approx. USD 2,179

## Cultural Course Track

	One Session (2 weeks)	Two Sessions (4 weeks)
<b>Tuition Fee</b>	<b>KRW 1,700,000</b> Approx. USD 1,277	<b>KRW 3,100,000</b> Approx. USD 2,329
<b>Activities</b>	<b>Free (2 activities)</b>	<b>Free (4 activities)</b>
<b>Housing</b>	<b>KRW 200,000</b> Approx. USD 150	<b>KRW 400,000</b> Approx. USD 301
<b>Total (Non-partner)</b>	<b>KRW 1,900,000</b> Approx. USD 1,427	<b>KRW 3,500,000</b> Approx. USD 2,630
<b>Total (Partner)</b>	<b>KRW 1,400,000</b> Approx. USD 1,052	<b>KRW 2,500,000</b> Approx. USD 1,878

\* Exchange Rate: USD 1 = KRW 1,331

## Early Bird Promotion - Extra KRW 100,000 Discount Approx. USD 75

If completing online application by April 30, 2025 and payment by May 10, 2025 (KST)



# How to Apply

Details on the application procedure and admission requirements for HESS 2025 are below

1

## Visit Website

Go to [ericasummer.hanyang.ac.kr](http://ericasummer.hanyang.ac.kr) and click 'Apply Now.'



2

## Apply Online

After creating an account, complete online application for HESS 2025.

3

## Submit Application

The application period is from Nov. 15, 2024 to May 30, 2025. Do not forget to submit your application within the deadline.

4

## Complete Payment

Payment instructions will be sent by your email. (Payment is recommended to be done in two weeks)

5

## Receive Student ID #

After completing payment, you will receive a student ID number which is needed for online course registration.

6

## Register Courses

Course registration is done online prior to the start of the program. Instructions will be sent to you via email.

# Experience KOREA, with HANYANG!

## HESS 2025 AWAITS

### HANYANG UNIVERSITY ERICA

Office of International Affairs

55 Hanyangdaehak-ro, Sangnok,  
Ansan, Gyeonggi-do, 15588, Korea

 +82-31-400-4917, 4931

 [hess@hanyang.ac.kr](mailto:hess@hanyang.ac.kr)

 [ericasummer.hanyang.ac.kr](http://ericasummer.hanyang.ac.kr)

 [hanyangericasummerschool](https://www.instagram.com/hanyangericasummerschool)

